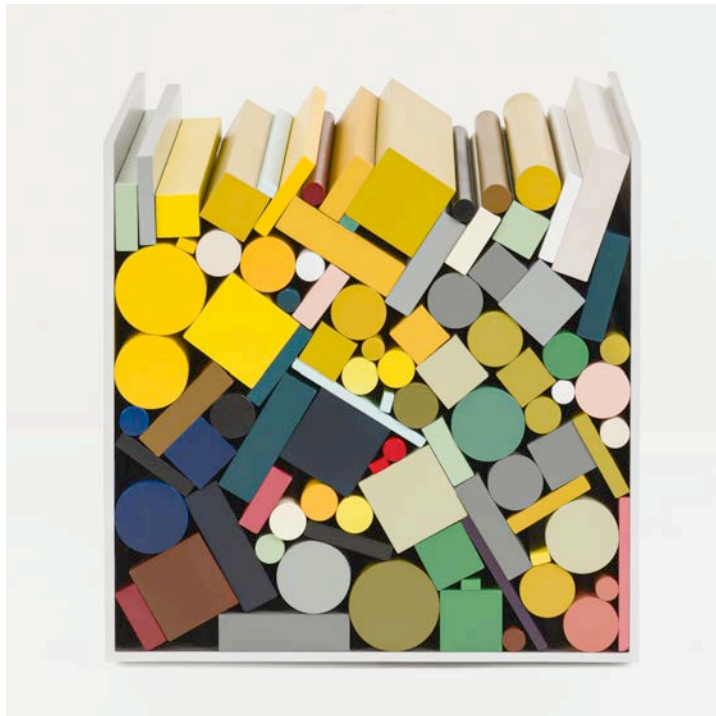


## SOPHIE SMALLHORN

March 26 – May 17, 2014

Opening reception: Saturday March 22, 2014, 3 – 6 pm



*Component Cube I*, 2013, aluminium, PVC, urethane board, cellulose paint, 145 x 145 x 145 mm

Sophie Smallhorn is known for her special spectrum of colours and way of using them. Through her work she explores the relationships between colour, volume and proportion, and finds this "bottomless pit of possibilities" a fascinating way to vary the mood and meaning of her pictures. Inspired by the Olympic rings and participating nations' flags, she created the spectacular colour installation for the 2012 Summer Olympics stadium wrap in London. Apart from public commissions, most of her work comprises objects, sculptures, and prints on paper.

"I create simple abstract three dimensional pieces which act as vehicles to hold studies of colour; almost always formal, hard edged, graphic, often almost architectural in their aesthetic." Smallhorn's first sculptures arose during her furniture design studies at Brighton University, where she created artworks out of waste materials. After graduating and moving to London, she began focusing entirely on her career as an artist.

The Wenger Gallery is exhibiting among others Smallhorn's screenprints on paper. Their titles such as *Yellow*, *Wine*, *Pale* or *Colour Wheel* not only refer to what they depict, but also derive from the overriding theme of colour in her works. These pictures comprise square colour zones in different concentrations and size proportions. In some cases several levels are printed on top of each other, partly resulting in very intensive colours.

Sophie Smallhorn always manages to achieve a special effect in her works through colour nuances, overlays and omissions.

Although working with colour is an intuitive process, Smallhorn's works are clearly well thought out and crafted with high precision. She consistently upholds an exciting dialogue between order and chaos, balance and imbalance, visible in her abstract three dimensional work titled *Component Cube*, *Component Ledge* and *Cube*.

Sophie Smallhorn, born 1971, currently lives and works in London. She has realized diverse art-in-building projects in London, Paris, Basel and Tokyo, lately in 2013 the glass canopy at 62 Buckingham Gate, London. This will be the artists first solo show in Zurich.